

**RUST-RAIDER™**  
PREPARES RUSTED SURFACES  
FOR PAINTING

**Rust Raider™** is a special blend of Phosphoric Acid, Sodium Bichromate and Surfactants formulated to react with iron oxide (rust) to chemically convert it to iron phosphate, forming a phosphate polymer corrosion resistant coating. It is also used to etch new ferrous metal surfaces, aluminum and galvanized steel prior to painting and is used as an adhesion promoter in adhesive bonding applications. Many leading paint manufacturers recommend using this type of product as a pretreatment coating to be used before priming and top coating.



### Available Sizes

**1840** - 32 fl oz. spray bottle  
w/ spray applicator  
6/case

**1840NS** - 32 fl oz. bottle  
NO spray applicator  
6/case

**1841** - 1 US gallon bottle  
NO spray applicator  
4/case

**Neutralizes Rust**

**Converts Rust To A  
Phosphate Polymer Coating**

**Etches Steel, Galvanized Steel  
& Aluminum**

**Improves Adhesion Of Primers**

**Stops Further Corrosion**

**Professional Strength**

**Extends Life Of Coatings**

**Fast Acting**

**Easy To Apply**

NOTE: Removing and converting bleeding rust from painted surfaces can be accomplished, however, paint qualities vary greatly and dulling and/or peeling may occur. Always test RUST-RAIDER on a small area first. International Epoxies & Sealers assumes no liability for damages to finished surfaces.

## 1840 RUST RAIDER Test Plates

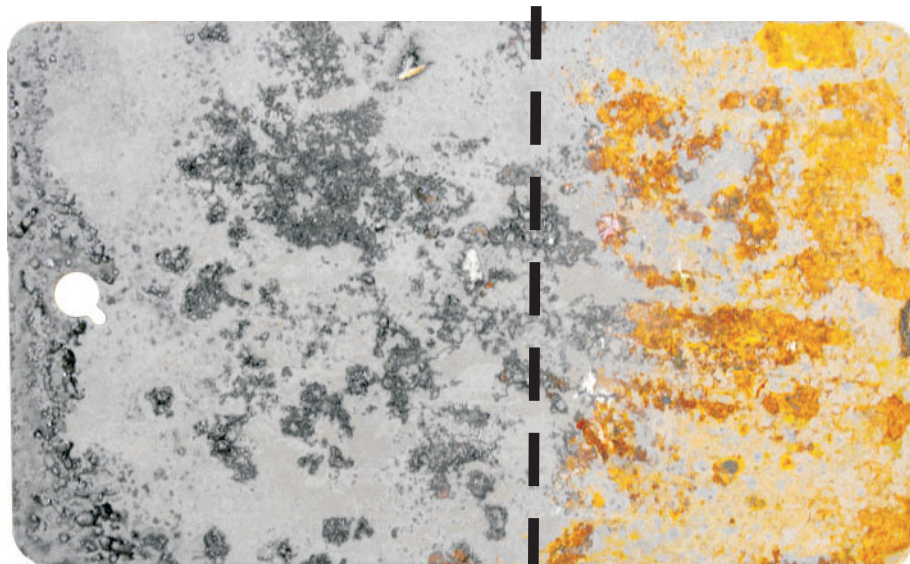
Treated with  
1840 Rust Raider ↘

↙ Untreated

*Neutralizes rust  
and prevents  
further corrosion!*

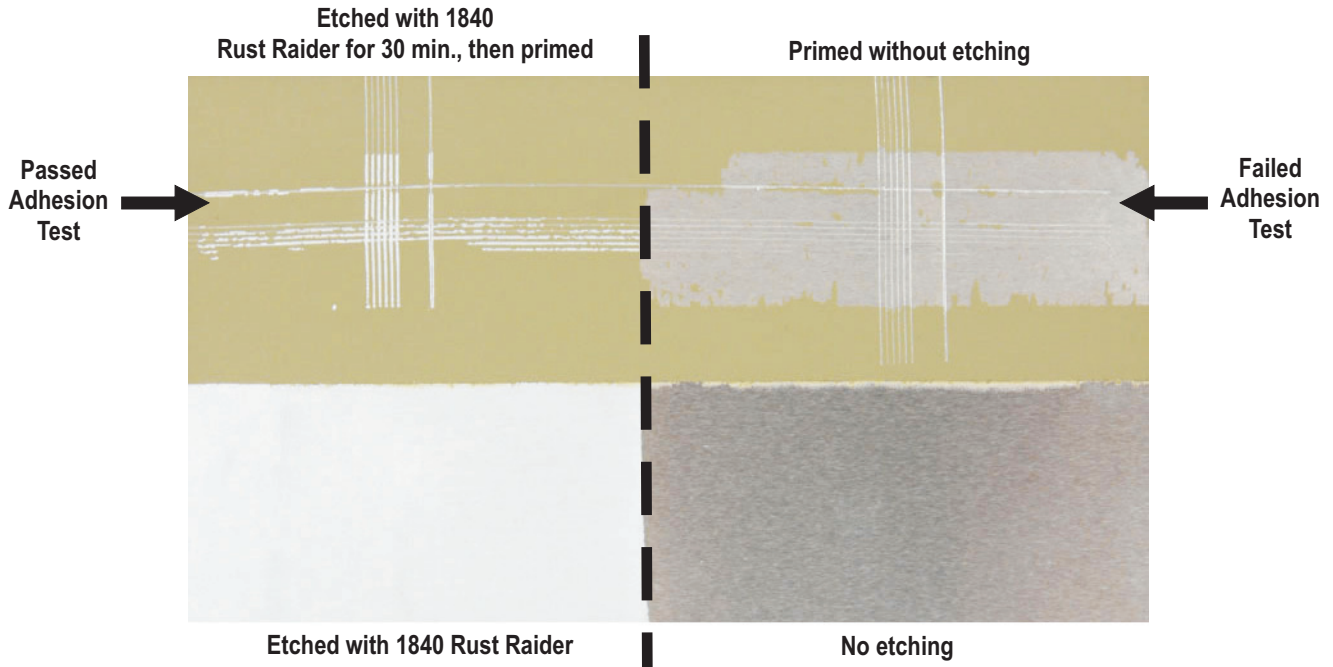


*Converts the rust  
to a phosphate  
polymer coating  
and is now ready  
to be painted!*

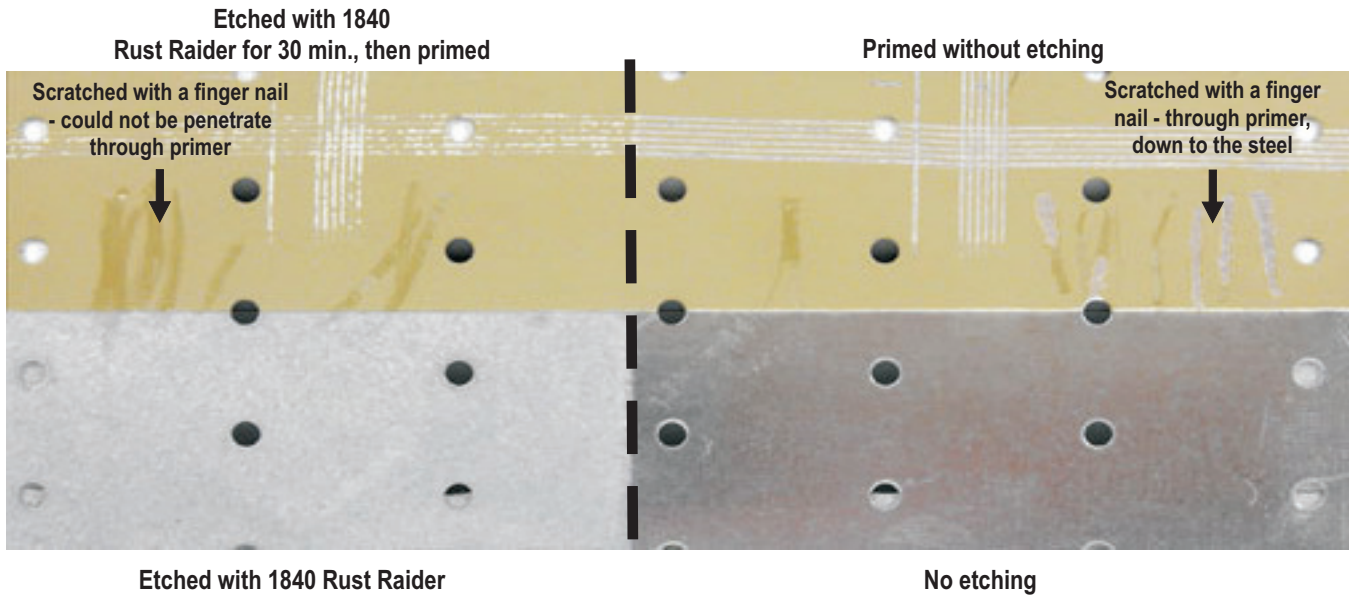


**BARE STEEL PLATE**

## 1840 RUST RAIDER Test Plates



### BARE ALUMINUM PLATE



### BARE GALVANIZED STEEL PLATE